

Installation of GoshawkII

Databases

GoshawkII uses two databases:

- **HawkSultanData** which stores memory map defined in Sultan unit, and **must not** be changed by user.
- **HawkSultanInfo** which stores customised data, such as client, site, device id, etc. Here is the list showing HawkSultanInfo structure changed in different GoshawkII revision:
 - GoshawkII version 6.0.64 Beta has changes made for saving and loading settings in a more efficient way, and to accomplish hawk link modem.
 - GoshawkII version 6.3.57 has changes made to store modem password into the database.
 - GoshawkII version 5.0.43 which introduces report functions.

When HawkSultanInfo structure changed, user may not be able to use data stored in old database. If user wants to keep data stored in HawkSultanInfo, please contact Hawk Measurement System.

Procedures taken for GoshawkII installation

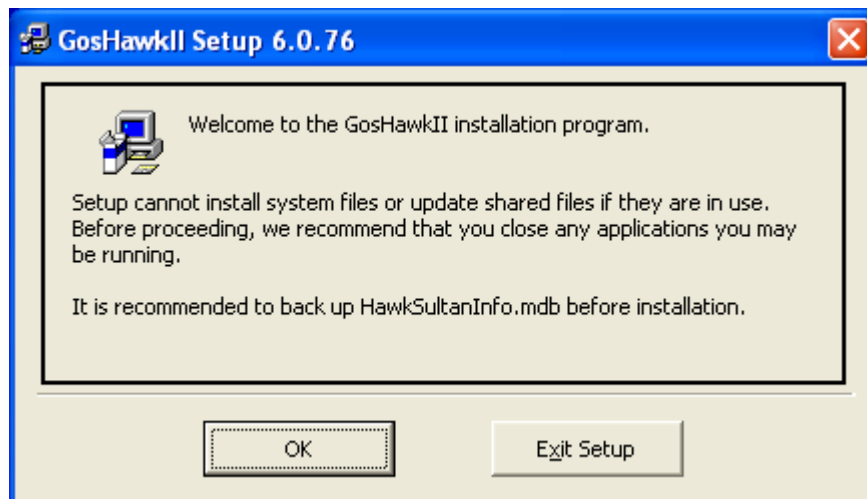
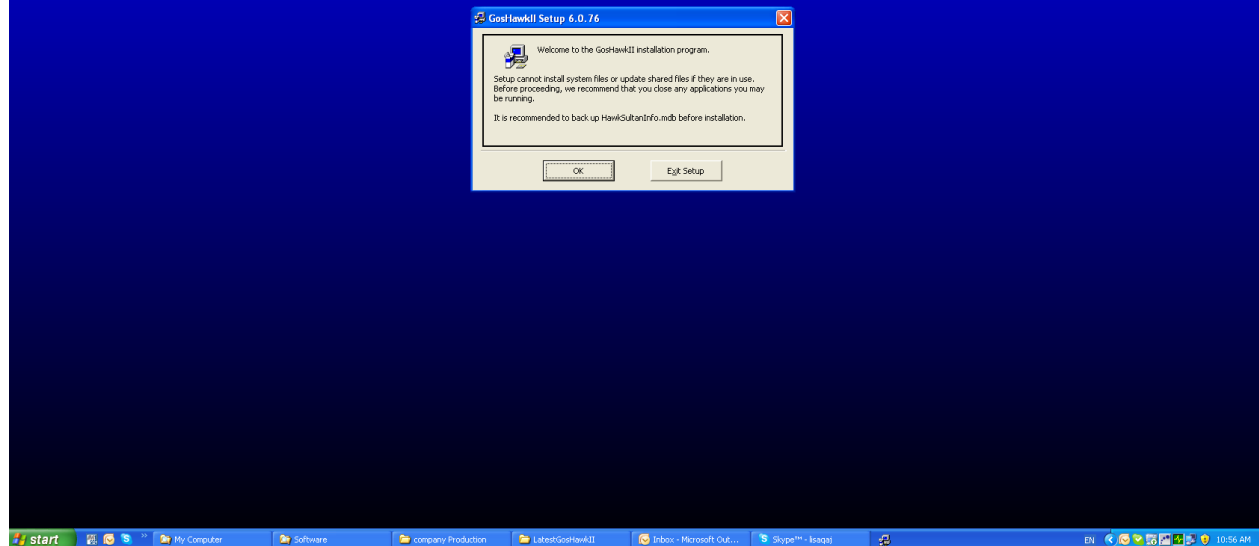
GoshawkII installation package comes in two ways, zip file or un-zip files.

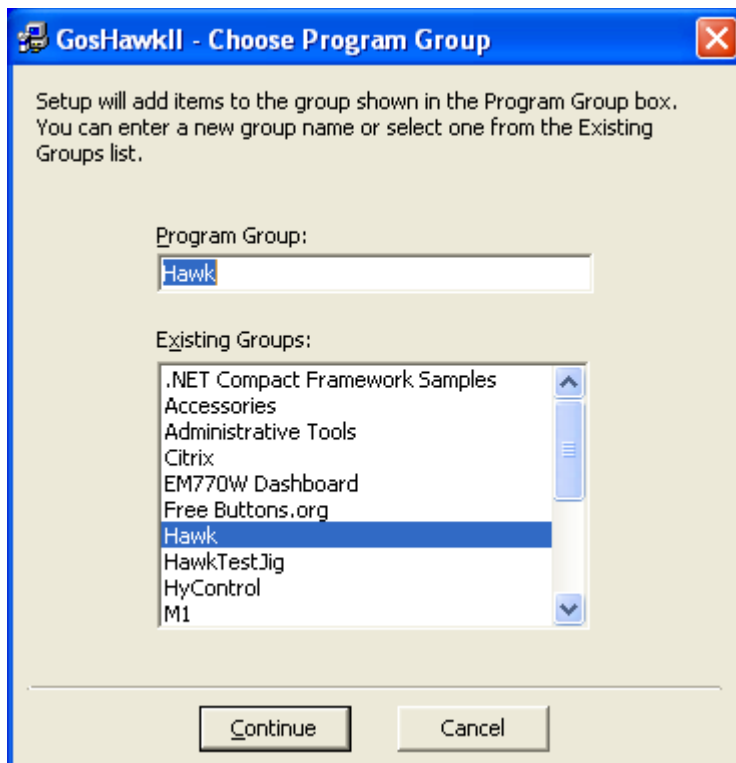
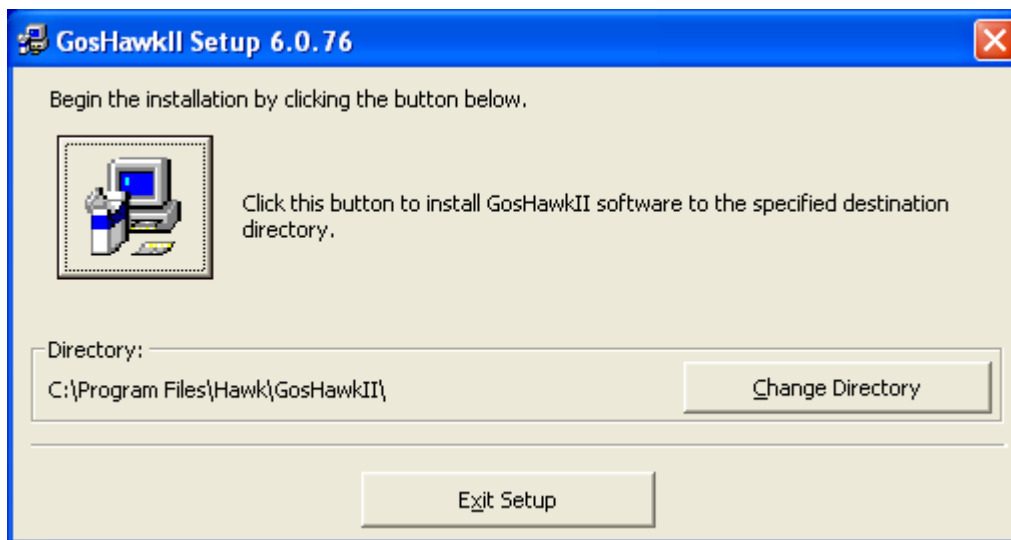
- If system has GoshawkII installed, before install GoshawkII, copy and paste database HawkSultanInfo.mdb into your backup folder. By default it is under C:\Program Files\Hawk\GoshawkII.

Note: if you are installing GoshawkII v6.0.86 or above, you may simply skip this step because system will back up HawkSultanInfo.mdb automatically. However, it is recommended to have a backup.

- Then go to Windows Start -> Control Panel -> Add or Remove Programs, and un-install current GoshawkII used in the system.
- Place the GoshawkII CD in the drive, access it from My Computer or Windows Explorer.
- If installation file is zip file, then unzip GoshawkII-x.x.xxzip where x.x.xx indicates GoshawkII revision, otherwise, go to next step.
- Double click setup.exe file to install the new GoshawkII. The program will be installed in C:\Program files\Hawk\ GoshawkII, refer to following images for more details.

GosHawkII Setup 6.0.76





Message shown in following image only available since GoshawkII version 6.0.86.

